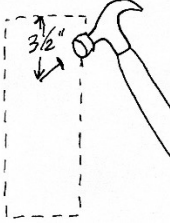


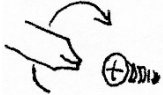
To mount to wood:

Suggestions: paneling, wood trim, or side of upper cabinet over sink to catch drips.

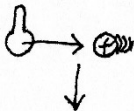
Mark with nail tip 3½" below where you want top of dryer, centered over its 3" width.



Screw short 1" black screw into nail mark. Leave ~ 3/8" protruding from surface.



Fit bottom circular part of keyhole on back of base over protruding screw head. **Push** base tight against surface and down to catch screw head behind upper narrow part of keyhole.

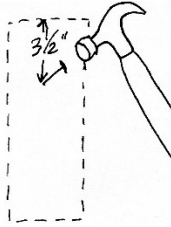


Adjust screw depth as needed to hold base firmly to surface. **Level** the base. Cork bumpers prevent it from rotating.

Ready to use!

To mount to drywall:

Mark with nail tip 3½" below where you want top of dryer, centered over its 3" width.

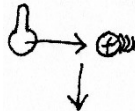


Screw EZ Anchor into nail mark with screwdriver, until its face is flush with drywall surface.

Screw chrome plated screw into center of anchor, leaving ~ 3/8" protruding from surface.



Fit bottom circular part of keyhole on back of base over protruding screw head. **Push** base tight against surface and down to catch screw head behind upper narrow part of keyhole.

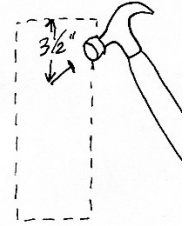


Adjust screw depth as needed to hold base firmly to surface. **Level** the base. Cork bumpers prevent base from rotating.

Ready to use!

To mount to a stud (behind drywall or paneling)

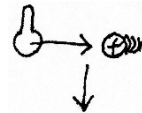
Mark with nail tip 3½" below where you want top of dryer, centered over its 3" width.



Screw longer 1½" black screw into nail mark, and through wall material into wood stud. Leave ~ 3/8" protruding from surface.



Fit bottom circular part of keyhole on back of base over protruding screw head. **Push** base tight against surface and down to catch screw head behind upper narrow part of keyhole.



Adjust screw depth as needed to hold base firmly to surface. **Level** the base. Cork bumpers prevent base from rotating.

Ready to use!